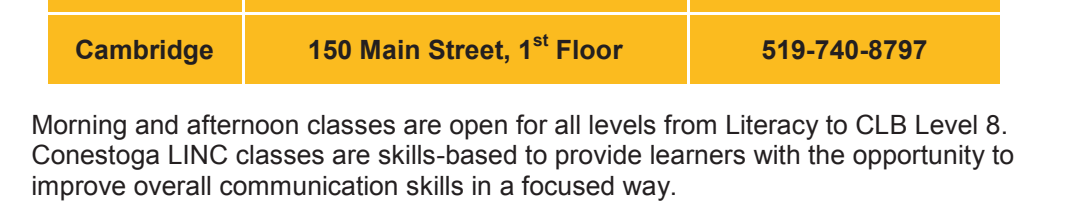




NEWS AND ANNOUNCEMENTS

Conestoga College LINC Program:



LINC Class Dates
 Contact information for the three Conestoga LINC sites is as follows:

City	Address	Telephone Number
Kitchener	800 King Street West, 3 rd Floor	519-886-3300
Waterloo	145 Lincoln Road, 2 nd Floor	519-886-6749
Cambridge	150 Main Street, 1 st Floor	519-740-8797

Morning and afternoon classes are open for all levels from Literacy to CLB Level 8. Conestoga LINC classes are skills-based to provide learners with the opportunity to improve overall communication skills in a focused way.

Workplace Communication Skills for Accounting and Health Care

Conestoga offers occupation specific language training courses to introduce newcomers to the working environment in Canada. These courses are designed to help immigrants learn the skills to effectively communicate in their chosen career fields.

Workplace Communication Skills for Accounting is running this spring and summer.

In the fall, **Workplace Communication Skills for Health Care** will be offered from **September 4 to December 14**.

To be eligible for these classes, individuals must be permanent residents with CLBs from 6 to 8 and experience in a field of health care.

Anyone interested in these courses can contact Jane Richards at 519-748-5220 x2421 or email her at jrichards@conestogac.on.ca.

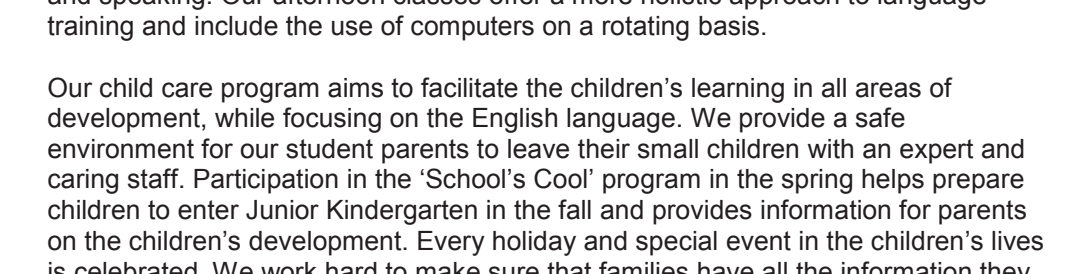
Pre-Health Bridge to Practical Nursing Diploma for Internationally Trained Health Professionals

Conestoga offers a nursing and language bridging program for anyone wishing to complete a practical nursing diploma program. All successful candidates continue into the second year of Conestoga's regular Practical Nursing Diploma program and are eligible to write the provincial registration exam for Practical Nurses.

To be eligible, applicants must have a health care background with Canadian Language Benchmark Assessment Level 7. The next session of the program starts in September. The dates are **September 4 to December 17**.

Anyone interested in this program should contact Jane Richards at 519-748-5220 x2421 or email her at jrichards@conestogac.on.ca.

St. Louis/St. Francis LINC Program:



St. Louis offers LINC classes at two campuses in Kitchener. Class times at both sites are mornings from 8:45 a.m. to 11:45 p.m. and afternoons from 12:30 p.m. to 3:00 p.m. Registration is ongoing and classes begin on September 10, 2012.

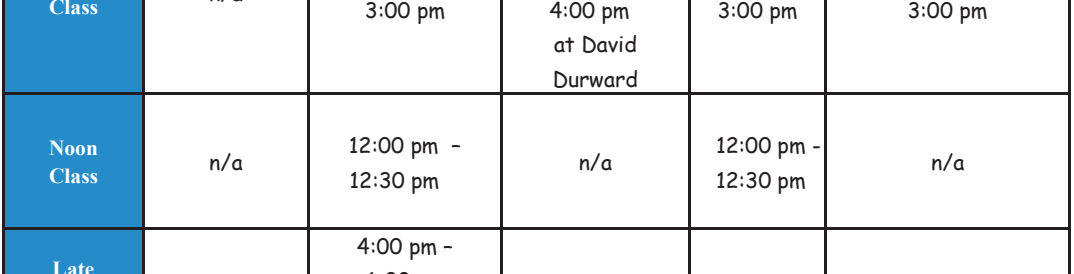
St. Louis main campus at 80 Young St. in Kitchener features:

- a 5 minute walk to the bus terminal
- classes from Literacy to CLB 8
- small class sizes
- bus tickets available to eligible clients
- LINC child care for children 6 months to 5 years and licensed child care for children 2.5 to 5 years
- Secondary School Credit courses and School to Work programs for students transitioning out of LINC

St. Francis Campus at 154 Gatewood Dr. in Kitchener features:

- located on the corner of Westmount Rd. and Queen's Blvd.
- close to GRT bus stop
- classes from Literacy to CLB 6
- small class sizes
- bus tickets available to eligible clients
- LINC child care for children ages 19 months to 5 years

English at First LINC Program:



English at First has been offering classes to newcomers to Canada at its site in First United Church, Waterloo, since 1990. At present, we provide classes to those LINC students in levels Literacy to CLB 4. These classes are in the morning from 9:00 a.m. to 12:00 p.m. on Monday to Friday and in the afternoon from 12:45 p.m. to 2:45 p.m. on Monday to Thursday. We offer smaller classes and a supportive environment to our students, while keeping their needs our number one priority.

Our classes are structured to offer skills-based instruction in the morning, with the first half focusing on reading and writing and the second half focusing on listening and speaking. Our afternoon classes offer a more holistic approach to language training and include the use of computers on a rotating basis.

Our child care program aims to facilitate the children's learning in all areas of development, while focusing on the English language. We provide a safe environment for our student parents to leave their small children with an expert and caring staff. Participation in the 'School's Cool' program in the spring helps prepare children to enter Junior Kindergarten in the fall and provides information for parents on the children's development. Every holiday and special event in the children's lives is celebrated. We work hard to make sure that families have all the information they need to access any services they require in the community.

LINC Classes Schedule: Fall 2012

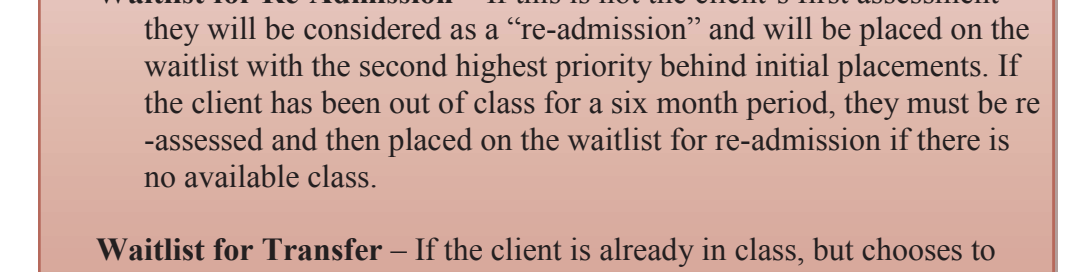
LINC Schools	Conestoga Kitchener	Conestoga Waterloo	Conestoga Cambridge	St. Louis	St. Francis	English at First
Fall Registration	Sept. 4 2012	Sept. 4 2012	Sept. 4 2012	Aug. 28 2012	Aug. 28 2012	Sept. 6 2012
Classes Start	Sept. 10 2012	Sept. 10 2012	Sept. 10 2012	Sept. 10 2012	Sept. 10 2012	Sept. 10 2012
Morning Class	8:45 am - 11:45 am	8:45 am - 11:45 am	8:45 am - 11:45 am	8:45 am - 11:45 am	8:45 am - 11:45 am	Mon. to Fri. 9:00 am - 12:00 pm
Afternoon Class	12:30 pm - 2:30 pm	12:30 pm - 2:30 pm	12:30 pm - 2:30 pm	12:30 pm - 3:00 pm	12:30 pm - 3:00 pm	Mon. to Thurs. 12:45 pm - 2:45 pm
Late Afternoon Class	3:00 pm - 5:00 pm	n/a	n/a	n/a	n/a	n/a
CLB Levels	Literacy - CLB 8	Literacy - CLB 8	Literacy - CLB 8	Literacy - CLB 8	Literacy - CLB 6	Literacy - CLB 4
Child Care	n/a	6 mons. - 6 ½ yrs.	24 mons. - 5 yrs.	6 mons. - 5 yrs.	19 mons. - 5yrs.	6 mons. - 5 yrs.

ESL Classes Schedule: Fall 2012

Fall 2012 ESL Schools	REC 455 University Ave. West	SMC St. Mary's Campus	SLC Cambridge Campus	SFC St. Francis Campus	EMM Emmanuel Campus
Fall Registration Starts	Sept. 8 on site	June 25	June 25	June 25	August 28 at St. Mary's or St. Francis and Sept. 4 on site
Classes Start	Sept. 15	Sept. 10	Sept. 10	Sept. 10	Sept. 10
Morning Class	n/a	8:45 am - 11:45 am	8:45 am - 11:45 am	8:45 am - 11:45 am	8:45 am - 11:45 am
Afternoon Class	n/a	12:30 pm - 3:00 pm	12:30 pm - 3:00 pm and 1:00 pm - 4:00 pm at David Durward	12:30 pm - 3:00 pm	12:30 pm - 3:00 pm
Noon Class	n/a	12:00 pm - 12:30 pm	n/a	12:00 pm - 12:30 pm	n/a
Late Afternoon Class	n/a	4:00 pm - 6:00 pm St. Louis Campus	n/a	n/a	n/a
Evening Class	n/a	6:30 pm - 9:30 pm M & W	6:30 pm - 9:30 pm	n/a	n/a
Saturday Class	9:30 am - 12:00 pm	9:00 am - 12:00 pm Registration on-site	n/a	n/a	n/a
Child Care	n/a	30 mons. - 5 yrs.	18 mons. - 5 yrs.	May use Child care at SMC	Daycare Centre on site

EVENTS

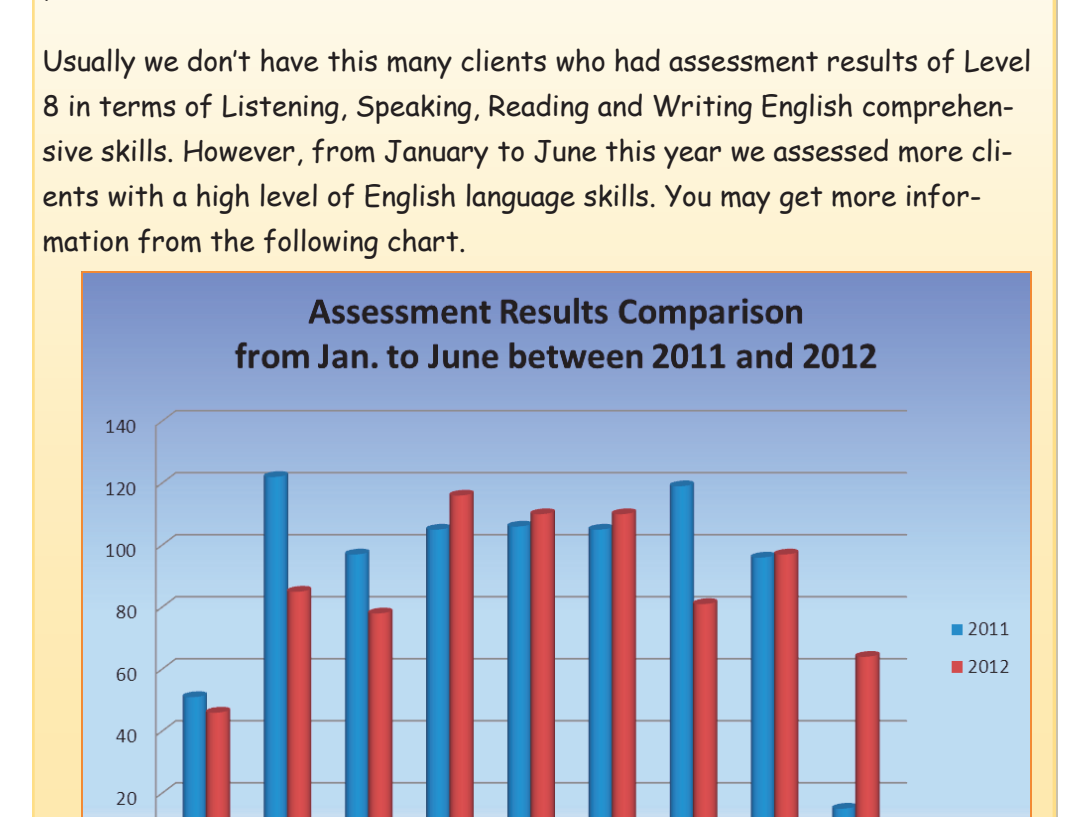
The Word on The Street 2012



The Word on The Street Canada Inc. is a non-profit corporation whose mandate is to foster the awareness and appreciation of the written word in our culture, to unite the country in a national, annual celebration of writing and reading and to highlight the importance of literacy in the lives of all Canadians. The Word On The Street is committed to improving the reading skills and functional literacy of Canadians.

This year, The Word on the Street Kitchener Book & Magazine Festival will take place on Sunday, September 23, between the hours of 11 a.m. and 5 p.m. at Victoria Park. This is a family fun event, so please mark your calendar and bring your children to enjoy a day of interesting activities.

Multicultural Day at St. Louis on May 17



Staff, students and visitors were treated to a wonderful celebration of the many cultures and traditions of our main campus LINC students. The students proudly shared a snapshot of the rich heritage and traditions of their home countries. The sights, sounds and tastes transported all those who attended to every corner of the earth, yet they were all under one roof. Thank you to the staff and students of our LINC Main campus who organized the day.

Did You Know ?

The YMCA Language Assessment and Referral Services received a few requests regarding how the YMCA Language Assessors and the LINC and ESL Programs service providers manage English language training class waitlists. So in this issue, we would like to talk about this subject.

ESL/LINC Class Waitlists

There are three types of waitlists and each one is ranked in order of priority. If no class space is available, or no child minding spots are free, clients will be placed on one of these three waitlists.

Waitlist for Initial Placement – If this is the client's first assessment and there is no space in an appropriate class or no child minding space at the school, the client will be considered as an "initial" placement and placed near the top of the waitlist with the highest priority. Government Assisted Refugees (GARs) are flagged as a priority on the initial placement waitlist based on Citizen and Immigration guidelines.

Waitlist for Re-Admission – If this is not the client's first assessment they will be considered as a "re-admission" and will be placed on the waitlist with the second highest priority behind initial placements. If the client has been out of class for a six month period, they must be re-assessed and then placed on the waitlist for re-admission if there is no available class.

Waitlist for Transfer – If the client is already in class, but chooses to change schools and the school they wish to attend is full, they will be placed on a "transfer" waitlist. The client will then have third priority for placement. They will be placed in the class after the first, (initial placement), or second (re-admission) priority students.

Once on the waitlist, it is the responsibility of the training provider to contact individuals to inform them of an available space in class, to make a waitlist extension or request another assessment.

The YMCA Language Assessment Centre cannot tell you how long you have to wait for class. If you have a question regarding your waitlist time, please contact the school.

Assessment Result Comparison from January to June between 2011 and 2012

The YMCA Language Assessment and Referral Services conducted 586 language assessments between January and June in 2011; this year the number is 545 language assessments within the same period. If we take look at the difference between 2011 and 2012 in terms of clients' levels, we find that there is dramatic drop in Levels 1, 2 and 6 in terms of language assessment results. However, there is big jump for clients with assessment results of Level 8. The Literacy Level, Level 4, 5 and 7 stay roughly the same for both years.

Usually we don't have this many clients who had assessment results of Level 8 in terms of Listening, Speaking, Reading and Writing English comprehensive skills. However, from January to June this year we assessed more clients with a high level of English language skills. You may get more information from the following chart.

Questions or comments ? Please contact the YMCA Language Assessment and Referral Services at (519) 579-9622 or send an email to linc@ckwymca.ca

